
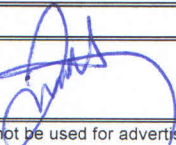
		<b>CERTIFICATE OF ANALYSIS</b>			Doc. Code: F-001EN	
Date of Issue:		01.01.2013	Revision No:	0.0	Revision Date:	-
Sample Type		Raw Material	Product			
			X			
Sample Informations	Product Name	: BIOBELINDA CC KREM		Ref. No. : DA145		
	Lot/Batch No.	: -		Sample Amount :	50 ml	
	Manufacturing Date	: -		Sample Date :	19.Sep.2014	
	Origin of the Product	: BIOBELINDA KOZMETİK VE TEMİZLİK URUNLERİ PAZARLAMA A.S.		Sampled by :	Eda GIRGIN	
Analysis Date: 22.09.2014      Analysis No.: AN145      Report Date : 22.09.2014						
Parameter	Method	Spesification	Result	Unit		
Appearance / Form	-	-	Solid	-		
Colour	-	-	Brown	-		
Taste / Odour	-	-	Specific	-		
in-vitro SPF	COLIPA	-	50	-		
Critical Wavelength	COLIPA	min. 370 nm	377	nm		
UVA / UVB Ratio	COLIPA	min. 1/3	0,572	-		
Specialist: Eda GIRGIN 						
Assessment :		Conform	X	Not conform		
Approval :		Zeynep YANAZ 	PİM EĞİTİM VE DANIŞMANLIK HİZ. TİC. LTD. ŞTİ. Göktürk Mh. İstanbul Cd. Sütlüce Sk. Daire: B Blok D.7 Eşup. İS.			
<b>Notes :</b> 1.The analysis report is for informational purposes only, can not be used for advertising purposes and the judicial-administrative jobs. 2.No part of this analysis report can not be used alone or separately.3. This report analyzes the features mentioned above applies to the sample. Our results are valid for test samples, may not represent the party belongs.The test samples are stored for a period of 30 days from the date of the report. During this period, chemical, microbiological and physical aspects of the examples of damaged or dangerous, can be disposed of without waiting for storage time completion. This report are reproduced without consent.						



# Labsphere Transmittance Analyzer SPF Report

Sample: BIOBELINDA CC KREM  
Description: In vitro SPF Analysis  
Operator: Eda GIRGIN  
Client: BIOBELINDA KOZMETIK VE TEMIZLIK URUNLERI PAZARLAMA A.S.  
Comment: -  
Date: 22.09.2014 10:33:35  
Unit serial number: 818090102  
Solar Irradiance Profile: COLIPA, 2007  
UVA/UVB ratio calculation used: Labsphere Method

## Study Statistics

	SPF	T(UVA)	T(UVB)	Lambda	Critical
Number of Sets:	1	1	1	1	1
Mean:	50	13,87%	1,63%	377	
STD:	n/a	n/a	n/a	n/a	n/a
COV:	n/a	n/a	n/a	n/a	n/a

UVA/UVB Ratio: 0,572

## Set 1

	SPF	T(UVA)	T(UVB)	Lambda	Critical
Number of Scans:	12	12	12	12	12
Mean:	50	13,87%	1,63%	377	
STD:	4,2	1,07%	0,14%	0,51	
COV:	8,5%	7,72%	8,44%	0,14%	

UVA/UVB Ratio: 0,572

Scan	SPF	Critical Wavelength
Scan 1	59	377
Scan 2	45	376
Scan 3	55	377
Scan 4	45	377
Scan 5	49	376
Scan 6	49	377
Scan 7	50	376
Scan 8	51	376
Scan 9	44	377
Scan 10	50	377
Scan 11	52	377
Scan 12	49	376

PİM EĞİTİM VE DANIŞMANLIK  
HİZ. TİC. LTD. ŞTİ.  
Göktürk Mah. İstanbul Cd. Süvenur Sit.  
Daire: B Blok D.7 Eyüp/ İST  
G.O.Paşa V.D.730 036 7475

# Labsphere Transmittance Analyzer SPF Report

Sample: BİOBELİNDİ CC KREM  
Description: In vitro SPF Analizi  
Operator: Eda GİRĞİN  
Client: BİOBELİNDİ KOZMETİK VE TEMİZLİK ÜRÜNLERİ PAZARLAMA A.Ş.  
Comment: -  
Date: 22.09.2014 10:33:35  
Unit serial number: 818090102  
Solar Irradiance Profile: COLIPA, 2007  
UVA/UVB ratio calculation used: Labsphere Method

## Study Statistics

	SPF	T(UVA)	T(UVB)	Lambda	Critical
Number of Sets:	1	1	1	1	1
Mean:	50	13,87%	1,63%	377	
STD:	n/a	n/a	n/a	n/a	n/a
COV:	n/a	n/a	n/a	n/a	n/a

UVA/UVB Ratio: 0,572

## Set 1

	SPF	T(UVA)	T(UVB)	Lambda	Critical
Number of Scans:	12	12	12	12	12
Mean:	50	13,87%	1,63%	377	
STD:	4,2	1,07%	0,14%	0,51	
COV:	8,5%	7,72%	8,44%	0,14%	

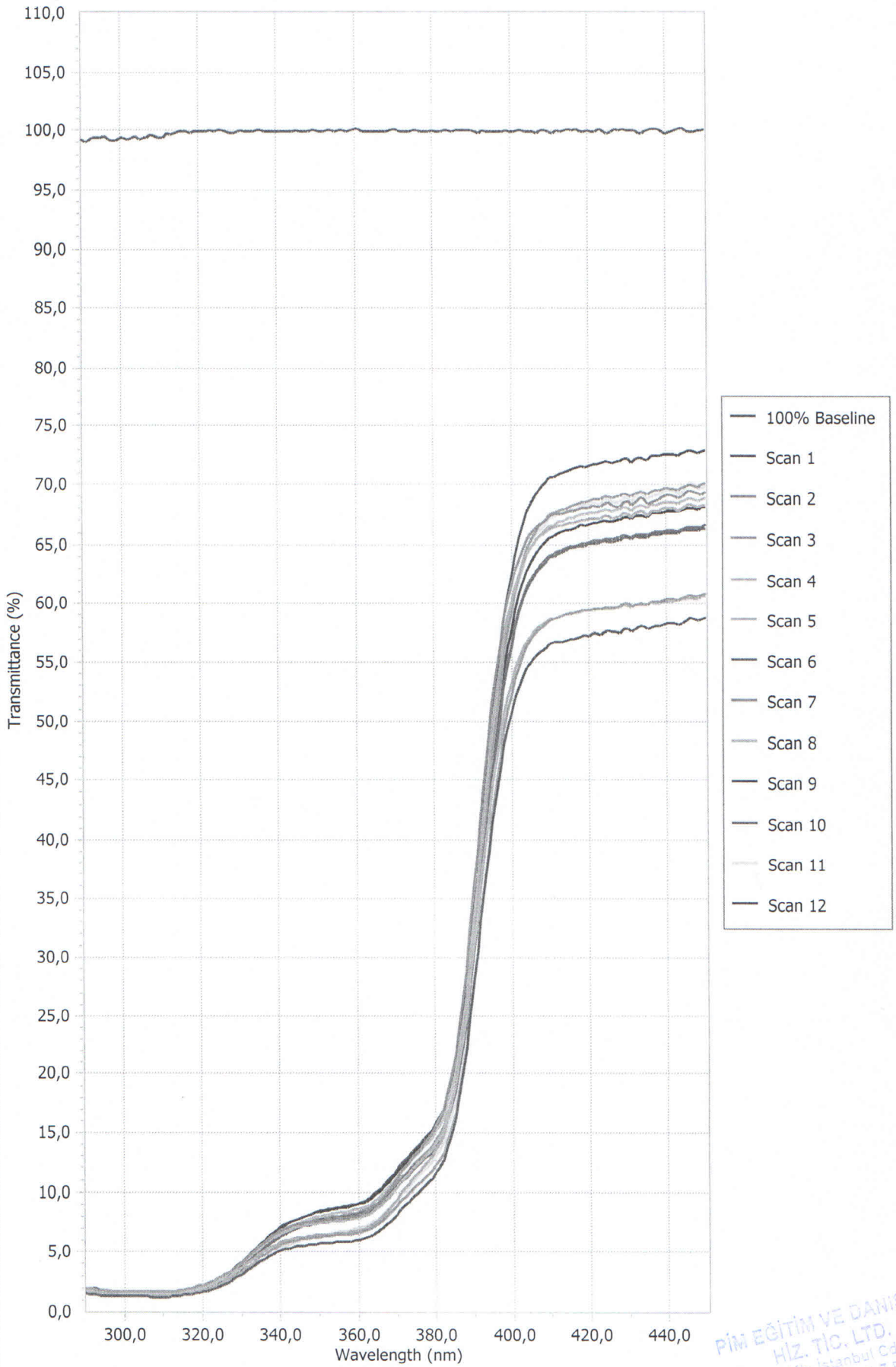
UVA/UVB Ratio: 0,572

Scan	SPF	Critical Wavelength
Scan 1	59	377
Scan 2	45	376
Scan 3	55	377
Scan 4	45	377
Scan 5	49	376
Scan 6	49	377
Scan 7	50	376
Scan 8	51	376
Scan 9	44	377
Scan 10	50	377
Scan 11	52	377
Scan 12	49	376

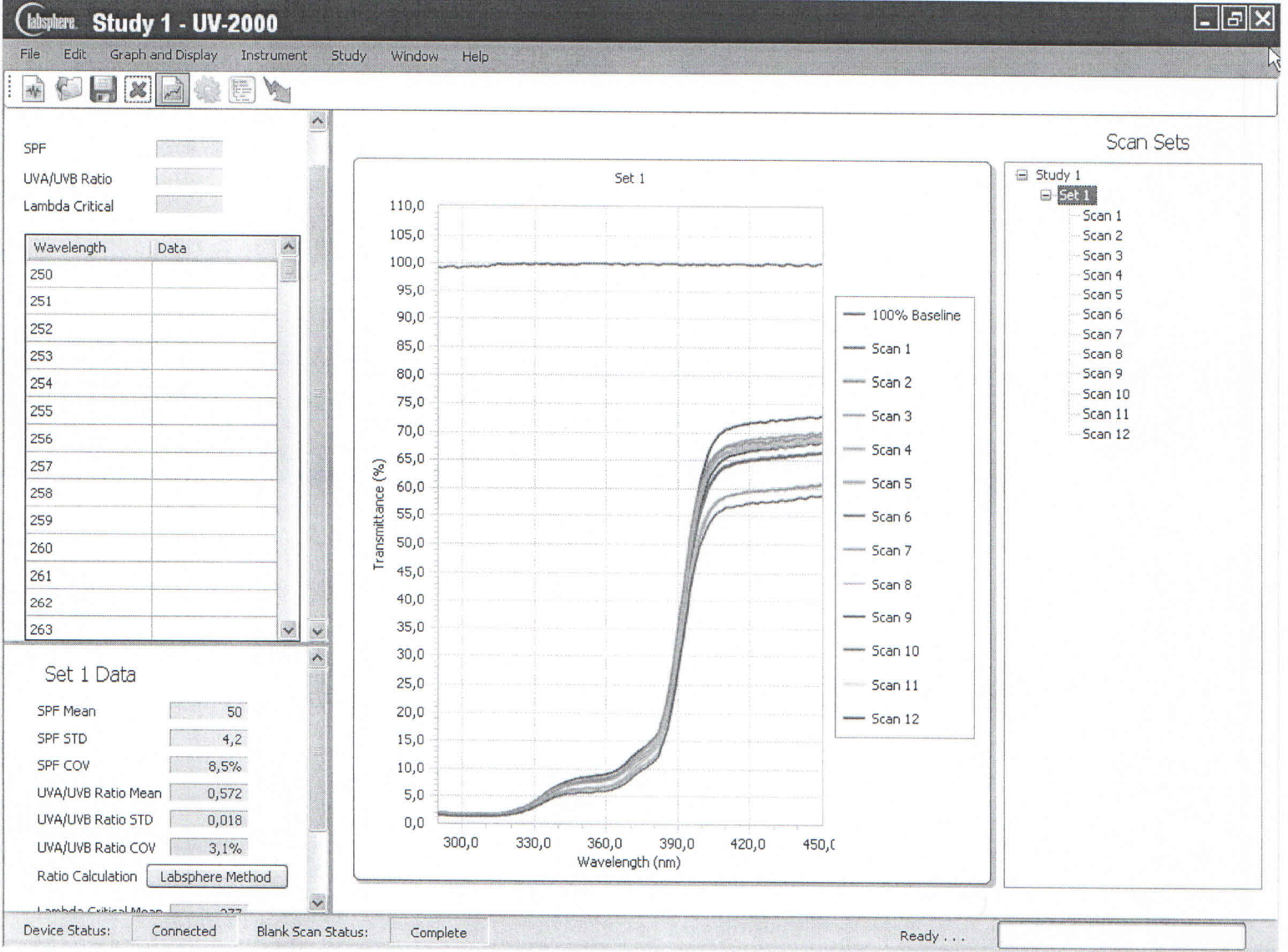
PİM EĞİTİM VE DANIŞMANLIK  
HİZ. TİC. LTD. ŞTİ.  
Gökçelik Yh. İstanbul Cd. Süvenus Sit  
Daire: B Blok D.7 Eyüp/İST.  
G.O.Paşa V.D.730 036 7475



Set 1



PİM EĞİTİM VE DANIŞMANLIK  
HİZ. TİC. LTD. ŞTİ.  
Göktürk Mah. İstanbul Cd. Süvenus Sit.  
Daire: B Blok B-7 Etiler/İST.  
G.O.Paşa V.D.730 036 7475



PİM EĞİTİM VE DANIŞMANLIK  
 HİZ. TİC. LTD. ŞTİ.  
 Göktürk Mh. İstanbul Cd. Suvarıncı Sk  
 Daire: B Blok D.7 Eyüp/ İST  
 G.O.Paşa V.D.730 036 7475